

INFORMATION

FOOD SERVICE: The U.S. Space & Rocket Center offers a wide variety of hot and cold entrees and accompaniments for breakfast, lunch and dinner. A snack bar is available for those who may prefer a typical "fast food" menu (burgers, fries, hot dogs, cookies).

GIFT SHOPS: SPACE GEAR, books, souvenirs, patches, film and a variety of other unique items are available at our existing gift shops.

CATALOG SALES: Please ask for a SPACE GEAR Catalog are available in all gift shop locations.

ADMISSION

Your one price admission includes all attractions. Special rates are available for groups of 15 or more paying individuals. Reservations are required in advanced. Price includes Museum, Spacedome Theater and NASA Bus Tour.

Adult	\$11.95
Senior Citizens & Children (3-12)	\$7.95
Membership (good for one year)	\$25.00
Spacedome Theater only	\$6.95
Museum only	\$6.95
NASA Bus Tour only	\$6.95

HOURS: Memorial Day through Labor Day
8:00 am to 7:00 pm
(ticket office closes at 6:00 pm)

Between Labor Day and Memorial Day
9:00 am to 6:00 pm
(ticket office closes at 5:00 pm)

Open every day except Christmas Day
* Prices and times are subject to change without notice.

U.S. Space & Rocket Center

One Tranquility Base • Huntsville, Alabama 35807 • 205/837-3400
Phone: 1-800-63 SPACE
Catalog Sales: 1-800-533-7281

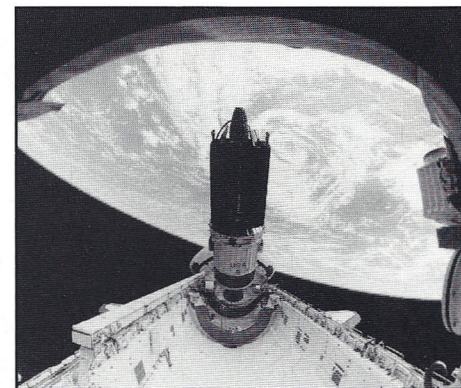
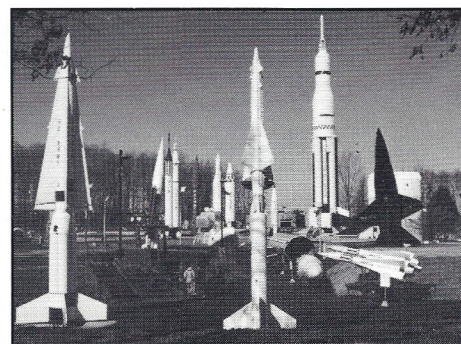
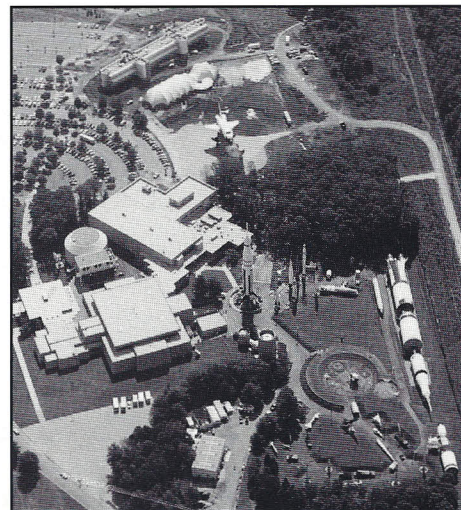
Your Scheduled Times:

Spacedome Theater: _____

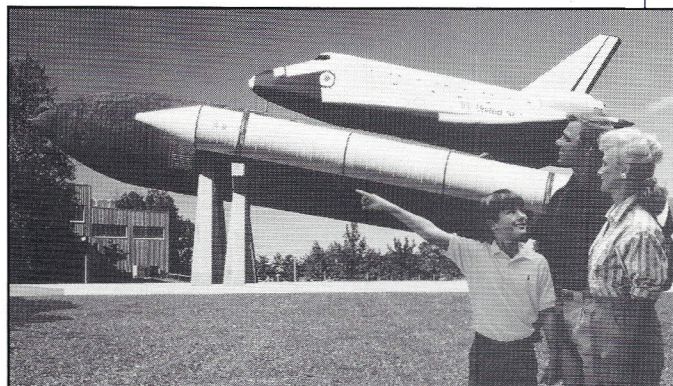
NASA Bus Tour: _____

U.S. Space & Rocket Center

MUSEUM GUIDE



Welcome to the U.S. SPACE & ROCKET CENTER, home of the world's largest space science museum and U.S. SPACE CAMP. Both old and young can explore man's quest to understand America's Space Program. Share the dream of the early rocket scientists as they reach for the moon. See into the future and the space missions of tomorrow. Tour the facility at your own pace and ask our floor guides for information. Demonstrations and hands-on exhibits ensure a fun day of learning for all at the U.S. SPACE & ROCKET CENTER.

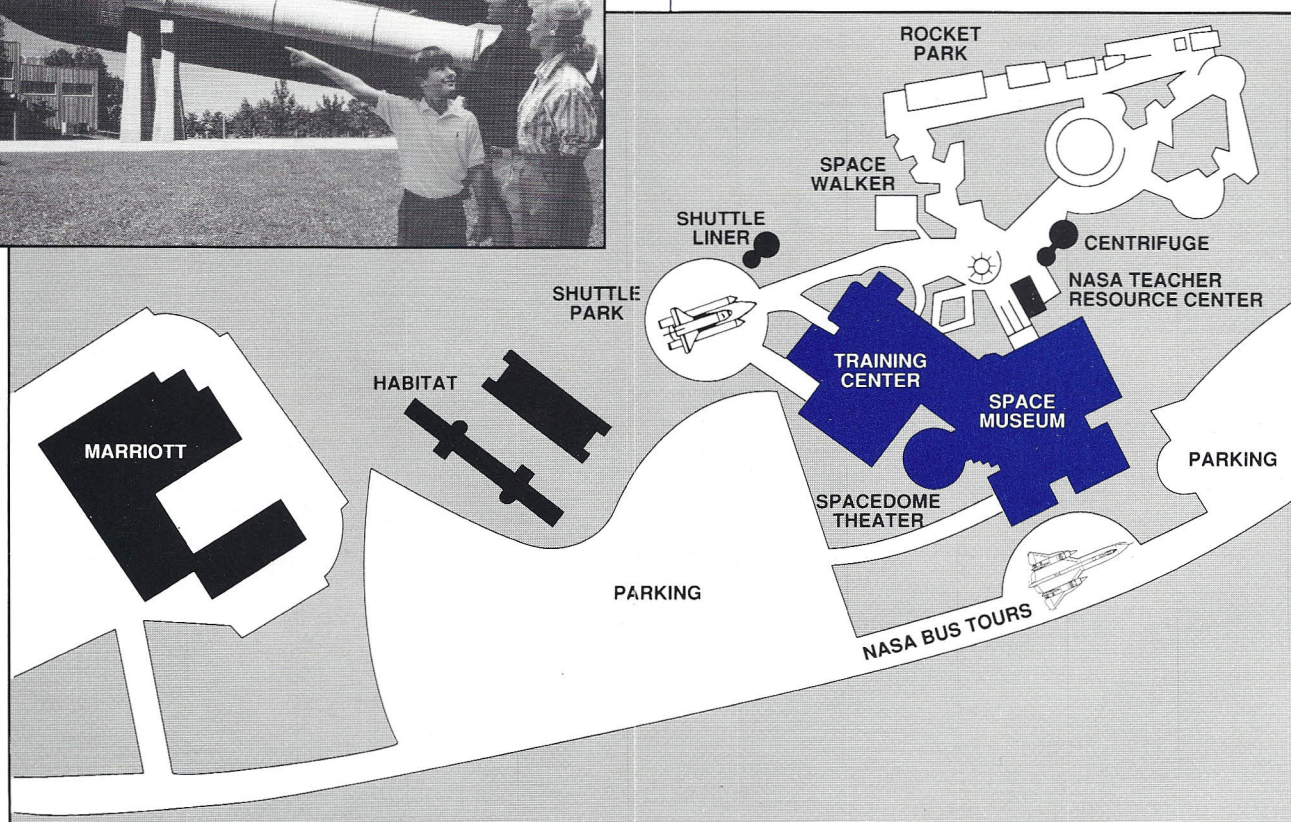


ROCKET PARK

German rocket scientist Dr. Wernher von Braun fathered the technology that launched the United States manned spaceflight program. The legacy of the von Braun rocket team and subsequent rocket technology are showcased in the four-acre Rocket Park area. Included in this area is the Saturn V rocket which has been declared a National Historic Landmark. Also on display is an impressive survey of our nation's defense capabilities donated by the U.S. Army Missile Command and the U.S. Air Force.

SHUTTLE PARK

Shuttle Park features the first public display of a full-scale Space Shuttle in the nation, complete with orbiter (the "Pathfinder"), external tank and solid rocket boosters. Some of these parts were used for testing while others flew on actual Shuttle missions. Expansion plans for Shuttle Park include a full-scale Space Station display.



MUSEUM

The U.S. Space & Rocket Center Museum has brought the excitement of space travel within the grasp of countless school children and adults. Fire a real rocket engine, sit in an Apollo capsule mock-up, perform tasks with a robotic arm, dock a Manned Maneuvering Unit with a satellite, and let your imagination soar. Dozens of hands-on exhibits and space artifacts, including the actual Skylab training mock-up and a full-scale Hubble Telescope exhibit await your inspection. A new addition, an actual Lockheed SR-71/A-12 Blackbird. This fantastic-looking Air Force Spy plane held many speed and altitude records before being retired. *Exclusive, through September 15, 1991, view actual Soviet space hardware in our internationally acclaimed "Red Star In Orbit" exhibit.*

NASA VISITOR CENTER/BUS TOUR

The nearby NASA Marshall Space Flight Center operates a Visitor Information Center in the lobby of the U.S. Space & Rocket Center. Jointly, the U.S. Space & Rocket Center and NASA offer narrated bus tours from the Museum to many NASA facilities. Tour historic rocket test stands where Huntsville teams developed the rockets and continue to develop the technologies that are carrying the U.S. into Space. Visit facilities used for astronaut training and see what the U.S. Space Station will be like.

SPACEDOME THEATER

BLUE PLANET—Explore the environment through the eyes of the space shuttle astronauts. The theater houses a spectacular 70 mm Omnimax® film system which will take you for a ride around the earth and into the stars.

U.S. SPACE CAMP TRAINING CENTER

The \$4.5 million SPACE CAMP Training Center allows you to view tomorrow's potential astronauts, scientists, educators and engineers as they train under SPACE CAMP's unique brand of hands-on space science education. Young people grades 4 through 12 are put to the test of performing a simulated shuttle mission. You may receive an application for U.S. SPACE CAMP at the Guest Services Desk in the main lobby.

NASA TEACHER RESOURCE CENTER

NASA Teacher Resource Center, located just outside the Museum entrance to Rocket Park, provides a valuable service to elementary and secondary educators. Visiting teachers can obtain spacecraft and mission profiles, film lists and a variety of other information for classroom use. Educators may call (205) 721-7115 for details.

