

INFORMATION

Food Service: The Space & Rocket Center cafeteria offers a wide variety of hot and cold entrees and accompaniments for breakfast, lunch and dinner. A snack bar is available for those who may prefer a typical "fast food" menu (burgers, fries, hot dogs, cookies).

Gift Shops: SPACE GEAR, books, souvenirs, patches, film and a variety of other unique items are available at either of our two gift shops.

Catalog Sales: Please ask for a SPACE GEAR Catalog at our gift shop locations.

ADMISSION

Your one price admission includes all attractions. Special rates are available for groups of 15 or more paying individuals. Reservations are required in advanced.

Price includes Museum, Spacedome Theater and NASA Bus Tour.

Adult	\$10
-------	------

Senior Citizens & Children (3-12)	\$6
--------------------------------------	-----

Season Pass (good for one year)	\$25
---------------------------------	------

Spacedome Theater only	\$5
------------------------	-----

Museum only	\$5
-------------	-----

NASA Bus Tour only	\$5
--------------------	-----

Hours: Memorial Day through Labor Day
8:00 am to 7:00 pm
(ticket office closes at 6:00 pm)

Between Labor Day and Memorial Day
9:00 am to 6:00 pm
(ticket office closes at 5:00 pm)

Open every day except Christmas Day.

The Space & Rocket Center

One Tranquility Base • Huntsville, AL 35807

Phone: 1-800- 63 SPACE

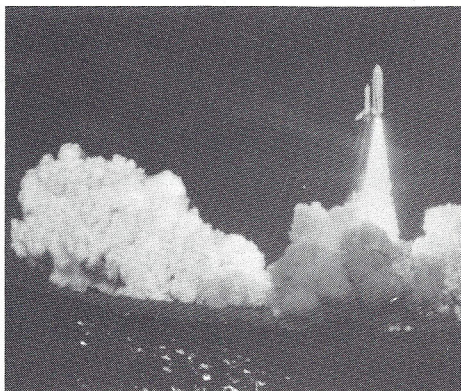
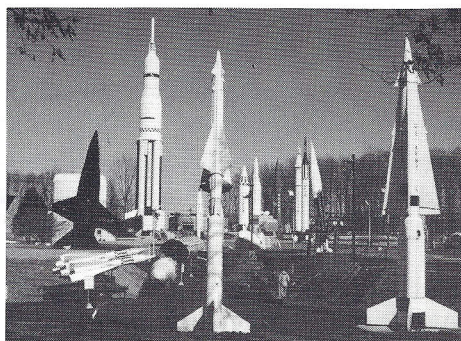
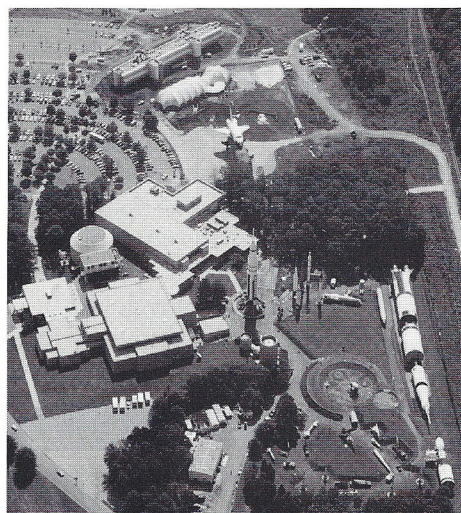
Catalog Sales: 1-800-533-7281

Your Scheduled Times: Spacedome Theater _____

NASA Bus Tour _____

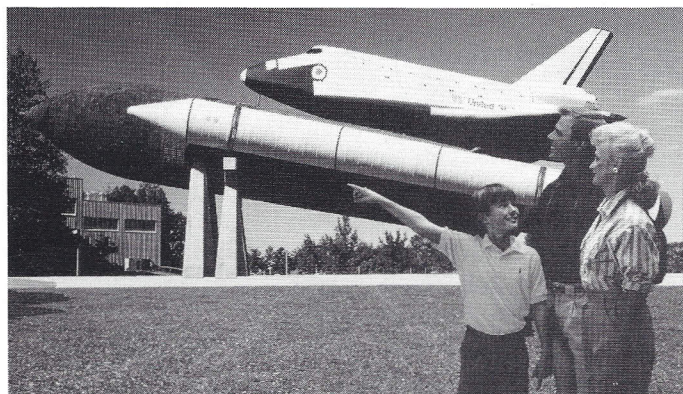
The Space & Rocket Center

MUSEUM GUIDE



SPRING 1989

WELCOME TO THE SPACE & ROCKET CENTER, home of the world's largest space science museum and U.S. SPACE CAMP®. Both old and young can explore man's quest to understand America's Space Program. Share the dream of the early rocket scientists as they reach for the moon. See into the future and the space missions of tomorrow. Tour the facility at your own pace or ask our floor guides for information. Demonstrations and hands-on exhibits ensure a fun day of learning for all at THE SPACE & ROCKET CENTER.

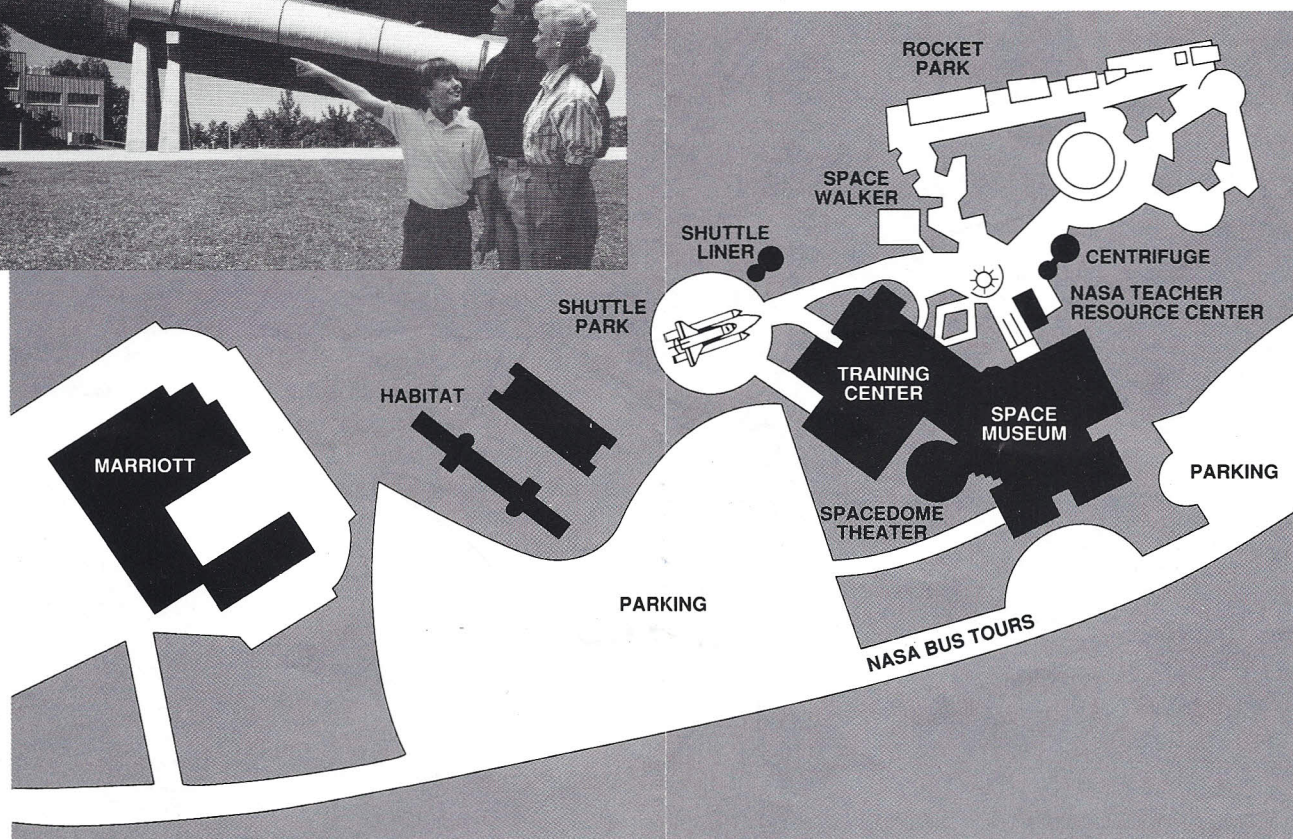


ROCKET PARK

German rocket scientist Dr. Wernher von Braun fathered the technology that launched the U.S. manned spaceflight program. The legacy of the von Braun rocket team and subsequent rocket technology are showcased in the four-acre Rocket Park area. Included in this area is the Saturn V rocket which has been declared a national historic landmark. Also on display is an impressive survey of our nation's defense capabilities donated by the U.S. Army Missile Command and the U.S. Air Force.

SHUTTLE PARK

Shuttle Park features the first public display of a full-scale Space Shuttle in the nation, complete with orbiter (the "Pathfinder"), external tank and solid rocket boosters. Some of these parts were used for testing while others flew on actual Shuttle missions. Expansion plans for the Shuttle Park includes a full-scale Space Station display.



MUSEUM

The Space & Rocket Center Museum has brought the excitement of space travel within the grasp of countless school children and adults. Fire a real rocket engine, sit in an Apollo capsule mock-up, perform tasks with a robotic arm and let your imagination fly. Some 65 hands-on exhibits and hourly presentations await your inspection. A new addition, the actual Skylab astronaut training mock-up, offers new insight regarding America's future Space Station.

NASA VISITOR CENTER/BUS TOUR

The nearby NASA Marshall Space Flight Center operates a Visitor Information Center in the lobby of The Space & Rocket Center. Jointly, The Space & Rocket Center and NASA offer narrated bus tours from the Museum to many Army and NASA facilities. Tour historic rocket test stands where Huntsville teams developed the rockets that carried the U.S. to space. Observe some of the rigors of astronaut training and see what the U.S. Space Station will be like.

SPACEDOME THEATER

Vibrant imagery and startling sound seemingly explode to capture the exciting intensity of shuttle lift-off in the Spacedome feature "The Dream Is Alive." The theater houses a spectacular 70mm Omnimax film system which includes a 67-foot hemispherical dome screen which will take you for a ride to the stars through the eyes of the Space Shuttle Astronauts.

U.S. SPACE CAMP TRAINING CENTER

The \$4.5 million SPACE CAMP Training Center allows you to view tomorrow's potential astronauts, scientists, educators and engineers as they train under SPACE CAMP's unique brand of hands-on space science education. Young people grades 4 through 12 are put to the test of performing a simulated shuttle mission. You may receive an application for U.S. SPACE CAMP by leaving your name and address at the Guest Services Desk in the main lobby.

NASA TEACHER RESOURCE CENTER

NASA Teacher Resource Center, located just outside the Museum entrance to Rocket Park, provides a valuable service to elementary and secondary educators. Visiting teachers can obtain spacecraft and mission profiles, film lists and a variety of other information for classroom use. Educators may call (205)721-7115 for details.

